

# 2025 Unified Planning Work Program (UPWP)

## Central Dakota Metropolitan Planning Organization

MPO Contact:  
John Van Dyke, Executive Director  
P: (701) 420-4524  
E: [john.vandyke@minotnd.gov](mailto:john.vandyke@minotnd.gov)  
10 3rd Ave SW  
Minot, ND 58701





## Contents

Introduction.....	5
Technical Advisory Committee.....	6
Map of CDMPO.....	7
Purpose of Unified Planning Work Program .....	8
Metropolitan Planning Factors .....	8
2024 Accomplishments.....	9
2025 Planned Work Activities .....	9
Section 100 – Program Support and Administration.....	10
Section 110 – Program Support .....	10
Section 120 – Planning Work Program.....	10
Section 130 – Training and Travel.....	10
Section 140 – Program Expenses .....	10
Section 200 – Long-Range Transportation Planning.....	10
Section 210 – Metropolitan Transportation Plan Development .....	11
Section 220 – Transit Development Plan .....	11
Section 300 – Short-Range Transportation Planning .....	11
Section 310 – Transportation Planning Support and Coordination.....	12
UPWP Funding.....	12
Total Revenue .....	12
Total Expenses .....	12
CDMPO Labor Cost .....	13
Program Funding .....	14
Section 110 - Program Support and Administration.....	15
Section 120 - Planning Work Program.....	17
Section 130 - Training and Travel.....	18
Section 140 - Program Expenses .....	19
Section 210 - Metropolitan Transportation Plan Development .....	20
Section 220 - Public Participation Plan.....	21
Section 310 - Transportation Planning Support and Coordination.....	22
Program Funding Summary .....	23
Adoption .....	24
Appendix 1 – 3C Agreement .....	24



## Table of Tables

Table 1. Work Program Sections and Associated Planning Factors.....	8
Table 2. CDMPO Revenues.....	12
Table 3. CDMPO Expenses .....	13
Table 4. CDMPO Labor Costs .....	14
Table 5. Section 110 Summary of Hours and Expenses .....	15
Table 6. Section 110 Detail of Hours and Expenses .....	16
Table 7. Section 110 Cost Share Breakdown .....	16
Table 8. Section 120 Summary of Hours and Expenses .....	17
Table 9. Section 120 Detail of Hours and Expenses .....	17
Table 10. Section 120 Cost Share Breakdown .....	<b>Error! Bookmark not defined.</b>
Table 11. Section 130 Summary of Hours and Expenses .....	18
Table 12. Section 130 Detail of Hours and Expenses .....	18
Table 13. Section 130 Cost Share Breakdown .....	18
Table 14. Section 140 Summary of Hours and Expenses .....	19
Table 15. Section 140 Detail of Hours and Expenses .....	19
Table 16. Section 140 Cost Share Breakdown .....	19
Table 17. Section 210 Summary of Hours and Expenses .....	20
Table 18. Section 210 Detail of Hours and Expenses .....	20
Table 19. Section 210 Cost Share Breakdown .....	20
Table 20. Section 220 Summary of Hours and Expenses .....	21
Table 21. Section 220 Detail of Hours and Expenses .....	21
Table 22. Section 220 Cost Share Breakdown .....	21
Table 23. Section 310 Summary of Hours and Expenses .....	22
Table 24. Section 310 Detail of Hours and Expenses .....	22
Table 25. Section 310 Cost Share Breakdown .....	22
Table 26. Total Program Hours and Expenses .....	23
Table 27. Total Program Cost Share .....	23
Table 28. Total Program Local Share .....	23



The preparation of this report was financed in part with funding from United States Department of Transportation (USDOT) and administered by the North Dakota Department of Transportation. The opinions, findings, and conclusions expressed in this publication are those of the authors and do not necessarily represent the USDOT or NDDOT.



## Introduction

The Central Dakota Metropolitan Planning Organization (CDMPO) was established in 2023 in response to the 2020 US Census. The Census identified the Cities of Minot and Surrey and areas of Ward County within the urbanized area. Collectively, these entities included the City of Burlington to be a part of the Metropolitan Planning Area, but not part of the urbanized area.

CDMPO is represented by the following political subdivisions:

- City of Burlington
- City of Minot
- City of Surrey
- Ward County

## Policy Board

The CDMPO is governed by a seven (7) member Policy Board. Current members of the Policy Board include:

Agency	Title
John Fjeldahl, Chair	Ward County
Michael Thiesen	City of Surrey
Jerick Hedges	City of Burlington
Howard “Bucky” Anderson	Ward County
Lisa Olson	City of Minot
Mark Jantzer	City of Minot
Harold Stewart	City of Minot

Each political subdivision may have one alternate member in the event an appointed member is unable to attend the Policy Board meeting. The current alternate members include:

Alternate Member	Political Subdivision
Kelsey Flick	City of Burlington
Steve Fennewall	City of Surrey
Paul Pitner	City of Minot
Shelly Wepler	Ward County

The Policy Board generally meets the fourth Thursday of each month, subject to adjustments stemming from holidays or known scheduling conflicts. The Policy Board has been meeting in the Executive Conference Room on the 3rd floor of the Minot City Hall, located at 10 3rd Ave SW, Minot, ND.





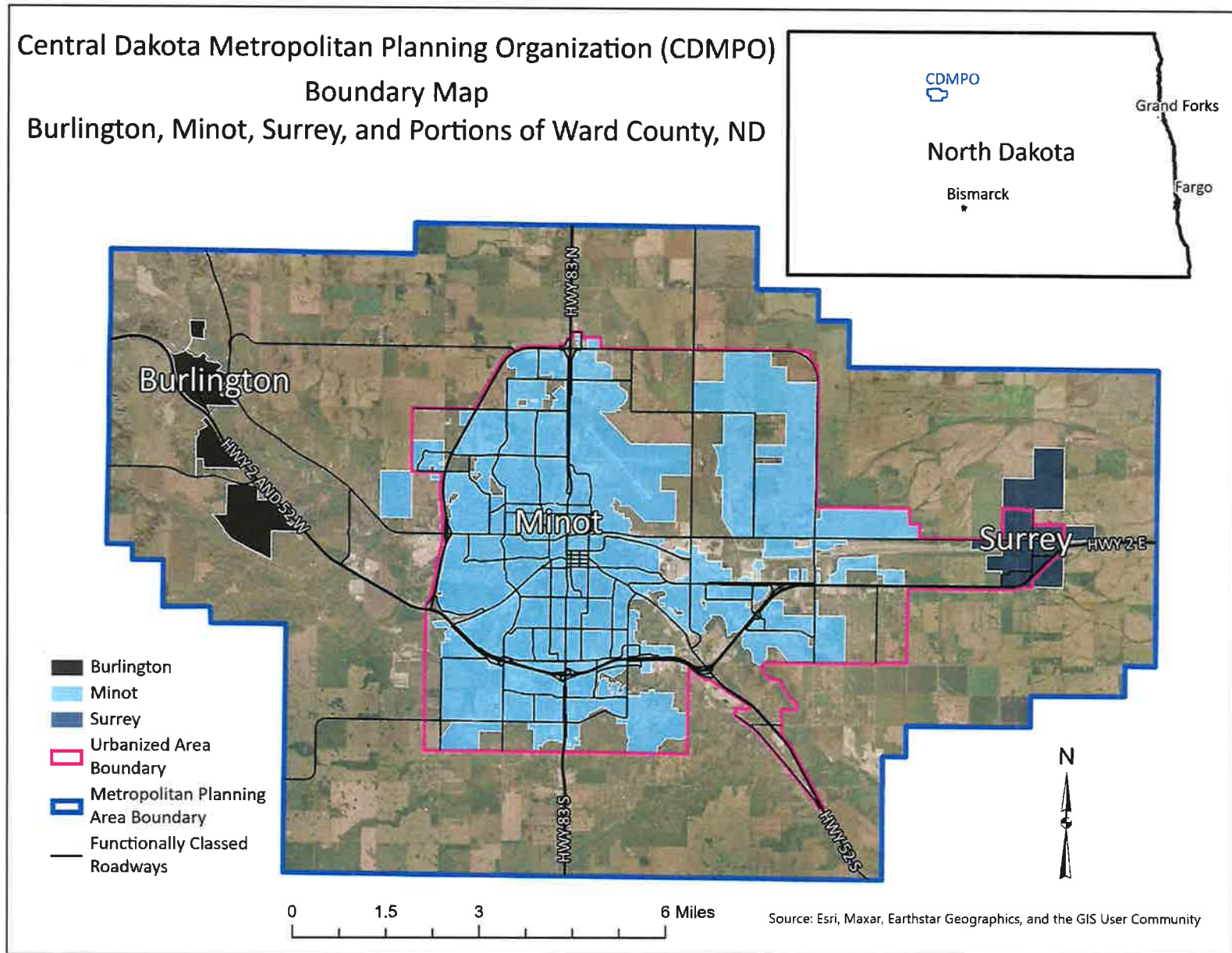
## Technical Advisory Committee

The Policy Board is advised by the Technical Advisory Committee comprised with staff employed or contracted to perform work involved in engineering, planning, or overall administration of the member political subdivisions. Those members include the following positions, whether directly employed or contracted, to provided services in such capacity:

Agency	Title
CDMPO	Executive Director
City of Burlington	City Auditor
City of Burlington	Public Works Director
City of Minot	City Engineer
City of Minot	Principle Planner
City of Minot	Transit Superintendent
City of Surrey	City Engineer
Ward County	County Engineer
Ward County	Planning & Zoning Administrator
NDDOT	Minot District Engineer
NDDOT	MPO Coordinator

The Technical Advisory Committee generally meets the second Tuesday of each month, subject to adjustments stemming from holidays or known scheduling conflicts. The Technical Advisory Committee has been meeting in Conference Room #3 of the City of Minot Public Works Building, located at 1025 31<sup>st</sup> St. SE, Minot, ND.

## Map of CDMPO



## Purpose of Unified Planning Work Program

The Unified Planning Work Program (UPWP) is required to be produced annually and must be approved by the CDMPO Policy Board, the North Dakota Department of Transportation (NDDOT), and the United States Department of Transportation (USDOT) via the Federal Highway Administration (FHWA) and Federal Transit Administration (FTA).

The UPWP provides a detailed description of all transportation related planning activities anticipated by the CDMPO during the calendar year. It also provides detailed work activities and budget information including local, state, and federal funding shares, to allow the state to document the requirements for planning grants distributed through the Federal Government.

## Metropolitan Planning Factors

Federal planning statutes specify the scope of the planning process to be followed by the CDMPO in ten planning factors. According to federal planning statutes, the planning process shall be continuous, cooperative, and comprehensive, and provide for consideration and implementation of projects, strategies, and services that will address the following factors:

1. Support the economic vitality of the metropolitan area, especially by enabling global competitiveness, productivity, and efficiency;
2. Increase the safety of the transportation system for motorized and non-motorized users;
3. Increase the security of the transportation system for motorized and non-motorized users;
4. Increase accessibility and mobility of people and freight;
5. Protect and enhance the environment, promote energy conservation, improve the quality of life, and promote consistency between transportation improvements and State and local planned growth and economic development patterns;
6. Enhance the integration and connectivity of the transportation system, across and between modes, for people and freight;
7. Promote efficient system management and operation;
8. Emphasize the preservation of the existing transportation system;
9. Improve the resiliency and reliability of the transportation system and reduce or mitigate stormwater impacts of surface transportation; and
10. Enhance travel and tourism.

CDMPO's work program elements are shown below with the corresponding Metropolitan Planning Factors each element addresses.

Table 1. Work Program Sections and Associated Planning Factors

[illegible]





Work Program Element	Planning Factor									
	1	2	3	4	5	6	7	8	9	10
Section 120 - Planning Work Program	✓	✓	✓	✓	✓	✓	✓	✓	✓	✓
Section 130 - Training and Travel	✓	✓	✓	✓	✓	✓	✓	✓	✓	✓
Section 140 - Program Expenses	✓	✓	✓	✓	✓	✓	✓	✓	✓	✓
<b>Section 200 - Long-Range Transportation Planning</b>										
Section 210 - Metropolitan Transportation Plan Development	✓	✓	✓	✓	✓	✓	✓	✓	✓	✓
Section 220 – Transit Development Plan	✓	✓	✓	✓	✓	✓	✓	✓	✓	✓
<b>Section 300 - Short-Range Transportation Planning</b>										
Section 310 - Transportation Planning Support and Coordination	✓	✓	✓	✓	✓	✓	✓	✓	✓	✓

## 2024 Accomplishments

2024 was the MPO's first full calendar year in operation. Much of the groundwork has been laid since January 1, 2024, including adoption of the 2024 UPWP, Title VI Policy, hiring an Executive Director, and consultant selection/kick-off of the 2050 Metropolitan Transportation Plan. It is anticipated that the Public Participation Plan (Section 220 of the 2024 UPWP) and approximately 33 percent of the Metropolitan Transportation Plan will be completed during the remainder of 2024.

In addition, agreements between the City of Minot and the CDMPO will be established that outline the arrangement between the two organizations, specifically related to the City as a direct subrecipient of federal funds on behalf of the CDMPO and the City of Minot employment of the Executive Director. Work on refining this relationship is ongoing and will continue through the end of 2024 and beyond.

## 2025 Planned Work Activities

The planned work activities through 2025 will focus on continued effort to establish a firm foundation for which to operate in years to come. A critical pillar of this effort is to adopt the CDMPO's first Metropolitan Transportation Plan, which is an areawide transportation plan that applies to all four (4) political subdivisions. The 2050 MTP kicked off in summer 2024 and must be completed no later than December 31, 2026. The CDMPO desires to have the MTP in place sooner than the end of 2026, with a target of the end of 2025. This push is reflected in the UPWP for 2025.

Other work that is still needed to be initiated or completed throughout 2025 includes:

- Completion of the 2026 UPWP
  - This effort will incorporate anticipation of 2027 activities to establish the organization's first two-year rolling UPWP.
- Complete development of the 2050 Metropolitan Transportation Plan (MTP)
- Begin work on establishing the 2026-2029 Transportation Improvement Program (TIP)
  - This work will include coordination with NDDOT and utilize the soon-to-be available eSTIP
- Begin work on the Transit Development Plan (TDP) (approximately 25% of the project will be completed in 2025, with the remainder occurring in 2026)



## Section 100 – Program Support and Administration

Program Support and Administration activities include the coordination of Technical Advisory Committee (TAC) and Policy Board meetings, staff training and travel, preparing work programs, UPWP creation, adoption, and amendments thereof, website creation, and quarterly budget reports.

### Section 110 – Program Support

Program Support activities keep the Policy Board and TAC informed and meeting on a regular basis. Actions include record keeping of Policy Board and TAC meetings, agendas and minutes, Title VI program work, website development, and attending MPO activity meetings, including but not limited to Planning Commission, County Commission, and City Council/Commission. This section will also include work on the creation of any new, or modifications of existing, agreements/contracts to clarify/effect the interoperability between the City of Minot and the CDMPO and obtain services to effect other Sections of this work program. In addition, this section includes financial and other state/federal reporting, paid time off and holiday pay for the Executive Director, and all other administrative functions to support the CDMPO. This activity will be complete at the end of 2025.

### Section 120 – Planning Work Program

Planning Work Program activities include creation of the 2026 UPWP, which will include anticipation of 2027 activities. It will also include any associated amendments and administrative modifications to the 2025 UPWP. This activity will be complete at the end of 2025.

### Section 130 – Training and Travel

Training and Travel includes all costs to attend MPO director's meetings, workshops, conferences, and other professional development activities. This activity will be complete at the end of 2025.

### Section 140 – Program Expenses

Program Expenses are the costs necessary to maintain the CDMPO office including but not limited to professional legal services, computer hardware, software, and maintenance/repair, office rent, telephone services, advertising for public input, engagement, and outreach, postage and shipping, materials and supplies, furnishings and equipment, copier and printer supplies, books and subscriptions, and memberships and associations.

The CDMPO will also enter into a three-year contract with the Advanced Traffic Analysis Center (ATAC) beginning January 1, 2025, which includes an annual fee. This annual fee is included in this section.

This activity will be complete at the end of 2025.

## Section 200 – Long-Range Transportation Planning



The Long-Range Transportation Planning element includes activities related to plan development and necessary support data for implementation of the Metropolitan Transportation Plan (MTP) and other plans. This section also includes public outreach and environmental justice activities.

#### Section 210 – Metropolitan Transportation Plan Development

Because CDMPO is new, a Metropolitan Transportation Plan (MTP) does not exist. The City of Minot and Ward County have corridor studies and long-range plans, but not a full encompassing document for the Metropolitan Planning Area.

Consultant selection is complete and funds are budgeted in 2024 to initiate creation of the MTP. An MTP is required to be established no later than December 31, 2026 and the budget reflects the ongoing activities related to this effort. The CDMPO desires to have the MTP in place sooner than the end of 2026, with a target of the end of 2025. This push is reflected in the UPWP for 2025.

Metropolitan Transportation Plan Development activities project management to include consistent interaction with the consultant, data sharing, scheduling and coordination, budgeting, and attendance at project meetings with TAC, PB, the public, and member-jurisdictions. It also includes all other activities necessary to support facilitation of the creation of the MTP.

The costs of developing the plan will be the primary expense the MPO has over the next year.

Finally, this project will utilize the full amount of Complete Streets funding set aside for 2025 in the amount of \$7,959 toward consultant fees for this effort.

#### Section 220 – Transit Development Plan

The City of Minot adopted a Comprehensive System Analysis in December 2013 surrounding the City's transit services. Many of the objectives have been accomplished since adoption and the area has changed significantly in the last decade.

Transit Development Plan activities will focus on securing consultant services to accomplish approximately 25 percent of the Transit Development Plan and surround project management to include consistent interaction with consultant, data sharing, scheduling and coordination, budgeting, and attendance at project meetings with TAC, PB, the public, and member-jurisdictions. It also includes all other activities necessary to support facilitation of the creation of the TDP. The remaining 75 percent will be budgeted for and accomplished in 2026.

#### Section 300 – Short-Range Transportation Planning



Activities in this section will focus on providing input and coordination with local agencies inside the MPA. The Executive Director will coordinate with planning departments on development proposals, transit planning, and other planning initiatives.

#### Section 310 – Transportation Planning Support and Coordination

The Executive Director will coordinate with planning and other departments on development proposals, transit planning, and other planning-related initiatives. This activity will be complete at the end of 2025.

## UPWP Funding

### Total Revenue

Revenue for CDMPO comes from a combination of federal and local funds. The total federal funds allocated to the CDMPO is \$499,228. The total local funding is a 20 percent match of the federal funding which equals \$124,807. Each local political subdivision allocates match based on the latest decennial census. The local match breakdown is as follows: Burlington 2%, Surrey 2%, Ward County 27%, and Minot 69%. The dollar amounts are shown in the Table 1. CDMPO Revenue.

Table 2. CDMPO Revenues

Funding Source	Amount	Percentage of Total
<b>2025 Authorized Federal Funds (80%)</b>	<b>\$ 499,228.00</b>	<b>80.0%</b>
ND PL	\$ 403,287.00	64.6%
ND CS	\$ 7,959.00	1.3%
FTA ND	\$ 87,982.00	14.1%
<b>Local Funds (20%)</b>	<b>\$ 124,807.00</b>	<b>20.0%</b>
Burlington Local Match (2%)	\$ 2,496.14	0.4%
Minot Local Match (69%)	\$ 86,116.83	13.8%
Surrey Local Match (2%)	\$ 2,496.14	0.4%
Ward County Local Match (27%)	\$ 33,697.89	5.4%
<b>Total Revenue</b>	<b>\$ 624,035.00</b>	<b>100%</b>

### Total Expenses



The expenses shown below are based on several assumptions for the 2025 budget since the CDMPO has no significant historical expense data. Many of the budget line items are modeled after the City of Minot's Engineering Department costs.

The furniture & equipment and capital infrastructure line items have several costs associated with them such as office furniture and office remodel costs. The budget line items will be refined as cost history is developed over the next few years.

Table 3. CDMPO Expenses

2025 CDMPO Expenses		
Salaries		
All	Executive Director	\$ 121,936.00
Sec. 110	Accountant	\$ 8,080.80
Sec. 110	Office Assistant	\$ 12,953.20
Benefits		
Sec. 110	Health Insurance	\$ 23,401.46
Sec. 110	Life Insurance	\$ 394.60
Sec. 110	Medicare	\$ 3,759.76
Sec. 110	NDPERS	\$ 12,056.07
Sec. 110	Short Term Disability	\$ 1,201.25
Sec. 110	Long Term Disability	\$ 668.25
Professional Services		
Sec. 210 & 220	Consultants	\$ 399,613.60
Sec. 130	Education & Training	\$ 800.00
Sec. 140	Professional Services - Legal	\$ 7,500.00
Sec. 140	ATAC Annual Fee	\$ 10,000.00
Sec. 140	Telephone Services and IT Maintenance and Repair Agreements	\$ 2,340.00
Sec. 140	Books, Subscriptions, Memberships, and Associations	\$ 2,300.00
Operational Expenses		
Sec. 130	Travel Costs	\$ 4,430.00
Sec. 140	Office Rent	\$ 3,100.00
Sec. 140	Advertising, Postage, and Shipping	\$ 6,500.00
Sec. 140	Department Materials, Copier/Printer Supplies, Furnishings, and Equipment	\$ 3,000.00
Department Total		\$ 624,035.00

CDMPO Labor Cost





The table below shows the CDMPO labor cost breakdown based on the salary and benefit totals for the Executive Director, Accountant, and Office Assistant<sup>1</sup>.

Table 4. CDMPO Labor Costs

CDMPO Labor Cost	
Executive Director	
2025 Hours	2080
Wage per hour	\$ 58.62
Benefits per hour	\$ 15.20
Total Hourly Rate	\$ 73.82
Accountant	
2025 Hours	208
Wage per hour	\$ 38.85
Benefits per hour	\$ 12.87
Total Hourly Rate	\$ 51.72
Office Assistant	
2025 Hours	520
Wage per hour	\$ 24.91
Benefits per hour	\$ 13.82
Total Hourly Rate	\$ 38.73

## Program Funding

<sup>1</sup> Hourly rates are a function of the annual cost of the respective labor cost component divided by the number of hours programmed for each position. Therefore, the hourly rates shown in Table 3. are rounded to the nearest \$0.01. For example, annual wages and hours for the Executive Director are programmed at \$121,936 and 2,080 respectively. This results in an hourly rate of approximately \$58.623076923. The labor costs for each table in this report reflect the more accurate hourly wage calculation.



Shown in the tables below are the funding allocations for each program within the UPWP. Sections and line items within each section are estimates and funds may need to be moved between sections or individual line items within each section as needed through an administrative modification or amendment.

An Administrative Modification is required for: 1) adjustments totaling no more than ten (10) percent of funding allocated within one section to another section; or 2) adjustments totaling no more than ten (10) percent of funding allocated for an individual line item within a section to another individual line item within the same section. For example, if \$1,000 was moved from Section A with a total budgeted amount of \$50,000 (2 percent of total) to Section B with a total budgeted amount of \$100,000 (1 percent of total) an administrative modification could be utilized to accommodate the adjustment.

Administrative modifications are effected by the Executive Director and the Technical Advisory Committee and Policy Board are informed thereafter of the changes. Adjustments exceeding ten (10) percent are considered amendments. Administrative modifications and amendments must follow the respective procedures as outlined in the Public Participation Plan.

### Section 110- Program Support and Administration

*Table 5. Section 110 Summary of Hours and Expenses*

Section 110 - Program Support and Administration	Hours	Total Cost
Total Hours - Executive Director, Accountant, and Office Assistant	1,488	\$ 87,003.74
Total Expenses		\$ -
<b>Section 110 - Program Support and Administration Total</b>	<b>1,488</b>	<b>\$ 87,003.74</b>



Table 6. Section 110 Detail of Hours and Expenses

	Section 110 - Program Support and Administration	Hours	Total Cost
	<b>Activities</b>		
	Preparation and attendance of TAC/PB meetings, attendance of CDMPO meetings throughout the state, grant writing, website development, administrative policy development, member jurisdiction coordination and presentations, financial and other state/federal reporting, Paid Time Off (PTO) and Holiday Pay, and other administrative functions to support the CDMPO.		
	<b>Hours</b>		
<b>Program Support</b>	Executive Director - All Activities	760	\$ 56,106.23
	Accountant - Preparation and attendance of TAC/PB meetings, financial and other state/federal reporting	208	\$ 10,757.92
	Office Assistant - Preparation and attendance of TAC/PB meetings, website development, financial and other state/federal reporting, other administrative functions to support the CDMPO	520	\$ 20,139.60
	Total Hours	1,488	\$ 87,003.74
	<b>Expenses</b>		
	N/a		\$ -

Table 7. Section 110 Cost Share Breakdown

Section 110 - Funding Allocation			
Entity	Local	Federal	Total
Federal		\$ 69,603.00	
Burlington	\$ 348.01		
Surrey	\$ 348.01		
Minot	\$ 12,006.52		
Ward County	\$ 4,698.20		
Other			
Total	\$ 17,400.75	\$ 69,603.00	\$ 87,003.74



## Section 120- Planning Work Program

Table 8. Section 120 Summary of Hours and Expenses

Section 120 - Planning Work Program		Hours	Total Cost
Total Hours - Executive Director		320	\$ 23,623.67
Total Expenses			\$ -
<b>Section 120 - Planning Work Program</b>		<b>320</b>	<b>\$ 23,623.67</b>

Table 9. Section 120 Detail of Hours and Expenses

Section 120 - Planning Work Program		Hours	Total Cost
<b>Planning Work Program</b>	<b>Activities</b>		
	Prepare UPWP, administrative modifications, and amendments		
	<b>Hours</b>		
	Executive Director - All Activities	320	\$ 23,623.67
	Total Hours	320	\$ 23,623.67
	<b>Expenses</b>		
	N/a		\$ -

Table 10. Section 120 Cost Share Breakdown

Section 120 - Planning Work Program			
Entity	Local	Federal	Total
Federal		\$ 18,898.94	
Burlington	\$ 94.49		
Surrey	\$ 94.49		
Minot	\$ 3,260.07		
Ward County	\$ 1,275.68		
Other			
Total	\$ 4,724.73	\$ 18,898.94	\$ 23,623.67



## Section 130- Training and Travel

Table 11. Section 130 Summary of Hours and Expenses

Section 130 - Training and Travel	Hours	Total Cost
Total Hours - Executive Director	120	\$ 8,858.88
Total Expenses		\$ 5,230.00
<b>Section 130 - Training and Travel</b>	<b>120</b>	<b>\$ 14,088.88</b>

Table 12. Section 130 Detail of Hours and Expenses

	Section 130 - Training and Travel	Hours	Total Cost
	<b>Activities</b>		
	Trainings, conferences, and other professional development activities		
	<b>Hours</b>		
	Executive Director - All Activities	120	\$ 8,858.88
	Total Hours	120	\$ 8,858.88
	<b>Expenses</b>		
	Training		\$ 800.00
	Travel		\$ 4,430.00
	Total Expense		\$ 5,230.00

Table 13. Section 130 Cost Share Breakdown

Section 130 - Training and Travel			
Entity	Local	Federal	Total
Federal		\$ 11,271.10	
Burlington	\$ 56.36		
Surrey	\$ 56.36		
Minot	\$ 1,944.27		
Ward County	\$ 760.80		
Other			
Total	\$ 2,817.78	\$ 11,271.10	\$ 14,088.88





## Section 140- Program Expenses

Table 14. Section 140 Summary of Hours and Expenses

Section 140 - Program Expenses	Hours	Total Cost
Total Hours	0	\$ -
Total Expenses		\$ 34,740.00
<b>Section 140 - Program Expenses</b>	<b>0</b>	<b>\$ 34,740.00</b>

Table 15. Section 140 Detail of Hours and Expenses

	Section 140 - Program Expenses	Hours	Total Cost
	<b>Activities</b>		
	N/a		
	<b>Hours</b>		
	N/a		\$ -
	<b>Expenses</b>		
	Professional Services - Legal		\$ 7,500.00
	Office Rent		\$ 3,100.00
	Advertising, Postage, and Shipping		\$ 6,500.00
	Department Materials, Copier/Printer Supplies, Furnishings, and Equipment		\$ 3,000.00
	Telephone Services and IT Maintenance and Repair Agreements		\$ 2,340.00
	Books, Subscriptions, Memberships, and Associations		\$ 2,300.00
	ATAC Annual Fee		\$ 10,000.00
	Total Expense		\$ 34,740.00

Table 16. Section 140 Cost Share Breakdown

Section 140 - Program Expenses			
Entity	Local	Federal	Total
Federal		\$ 27,792.00	
Burlington	\$ 138.96		
Surrey	\$ 138.96		
Minot	\$ 4,794.12		
Ward County	\$ 1,875.96		
Other			
Total	\$ 6,948.00	\$ 27,792.00	\$ 34,740.00



## Section 210- Metropolitan Transportation Plan Development

Table 17. Section 210 Summary of Hours and Expenses

Section 210 - Metropolitan Transportation Plan (MTP)	Hours	Total Cost
Total Hours - Executive Director	520	\$ 38,388.47
Total Expenses		\$ 345,000.00
<b>Section 210 - Metropolitan Transportation Plan Development</b>	<b>520</b>	<b>\$ 383,388.47</b>

Table 18. Section 210 Detail of Hours and Expenses

	Section 210 - Metropolitan Transportation Plan (MTP)	Hours	Total Cost
	<b>Activities</b>		
<b>MTP Development</b>	Project management to include consistent interaction with consultant, data sharing, scheduling and coordination, budgeting, and attendance at project meetings with TAC, PB, the public, and member-jurisdictions. Includes all other activities necessary to support facilitation of the creation of the MTP.		
	<b>Hours</b>		
	Executive Director - All Activities	520	\$ 38,388.47
	Total Hours	520	\$ 38,388.47
	<b>Expenses</b>		
	MTP Consultant Contract		\$ 337,041.00
	Complete Streets		\$ 7,959.00
	Total Expenses		\$ 345,000.00

Table 19. Section 210 Cost Share Breakdown

Section 210 - Metropolitan Transportation Plan Development			
Entity	Local	Federal	Total
Federal		\$ 306,710.78	
Burlington	\$ 1,533.55		
Surrey	\$ 1,533.55		
Minot	\$ 52,907.61		
Ward County	\$ 20,702.98		
Other			
Total	\$ 76,677.69	\$ 306,710.78	\$ 383,388.47



## Section 220 – Transit Development Plan

Table 20. Section 220 Summary of Hours and Expenses

Section 220 - Transit Development Plan		Hours	Total Cost
Total Hours - Executive Director		260	\$ 19,194.24
Total Expenses			\$ 54,613.60
<b>Section 220 – Transit Development Plan</b>		<b>260</b>	<b>\$ 73,807.84</b>

Table 21. Section 220 Detail of Hours and Expenses

Section 220 Transit Development Plan (TDP)		Hours	Total Cost
<b>Transit Development Plan</b>	<b>Activities</b>		
	Project management to include consistent interaction with consultant, data sharing, scheduling and coordination, budgeting, and attendance at project meetings with TAC, PB, the public, and member-jurisdictions. Includes all other activities necessary to support facilitation of the creation of the TDP.		
	<b>Hours</b>		
	Executive Director - All Activities	260	\$ 19,194.24
	Total Hours	260	\$ 19,194.24
	<b>Expenses</b>		
	TDP Consultant Contract		\$ 54,613.60
	Total Expenses		\$ 54,613.60

Table 22. Section 220 Cost Share Breakdown

Section 220 – Transit Development Plan			
Entity	Local	Federal	Total
Federal		\$ 59,046.27	
Burlington	\$ 295.23		
Surrey	\$ 295.23		
Minot	\$ 10,185.48		
Ward County	\$ 3,985.62		
Other			
Total	\$ 14,761.57	\$ 59,046.27	\$ 73,807.84



## Section 310- Transportation Planning Support and Coordination

Table 23. Section 310 Summary of Hours and Expenses

Section 310 - Transportation Planning Support and Coordination	Hours	Total Cost
Total Hours - Executive Director	100	\$ 7,382.40
Total Expenses		\$ -
<b>Section 310 - Transportation Planning Support and Coordination</b>	<b>100</b>	<b>\$ 7,382.40</b>

Table 24. Section 310 Detail of Hours and Expenses

	Section 310 - Transportation Planning Support and Coordination	Hours	Total Cost
	<b>Activities</b>		
	Coordination with planning and other departments on development proposals, transit planning, and other planning-related initiatives.		
	<b>Hours</b>		
	Executive Director - All Activities	100	\$ 7,382.40
	Total Hours	100	\$ 7,382.40
	<b>Expenses</b>		
	N/A		

Table 25. Section 310 Cost Share Breakdown

Section 310 - Transportation Planning Support and Coordination			
Entity	Local	Federal	Total
Federal		\$ 5,905.92	
Burlington	\$ 29.53		
Surrey	\$ 29.53		
Minot	\$ 1,018.77		
Ward County	\$ 398.65		
Other			
Total	\$ 1,476.48	\$ 5,905.92	\$ 7,382.40



## Program Funding Summary

The tables below show a total summary of all program hours and expenses.

*Table 26. Total Program Hours and Expenses*

Total Program Hours and Expenses	Hours	Total Cost
Total Hours - Executive Director, Accountant, and Office Assistant	2,808	\$ 184,451.40
Total Expenses		\$ 439,583.60
<b>Total Program Hours and Expenses</b>	<b>2,808</b>	<b>\$ 624,035.00</b>

*Table 27. Total Program Cost Share*

Total Program Cost Share	Total Cost
Total Local Cost	\$ 124,807.00
Total Federal Cost	\$ 499,228.00
<b>Total Program Hours and Expenses</b>	<b>\$ 624,035.00</b>

*Table 28. Total Program Local Share*

Total Program Local Share	Total Cost
Burlington	\$ 2,496.14
Surrey	\$ 2,496.14
Minot	\$ 86,116.83
Ward County	\$ 33,697.89
<b>Total Program Hours and Expenses</b>	<b>\$ 124,807.00</b>





## Adoption

The Central Dakota Metropolitan Planning Organization has adopted the 2025 Unified Planning Work Program on September 19, 2024.

John Fjeldahl  
John Fjeldahl, Chairman

Sept 19, 2024  
Date



## Appendix 1 – 3C Agreement